

# THE ALPINE

---

DESIGNED FOR STUNNING VIEWS AND  
UNFORGETTABLE ESCAPES.







FRONT















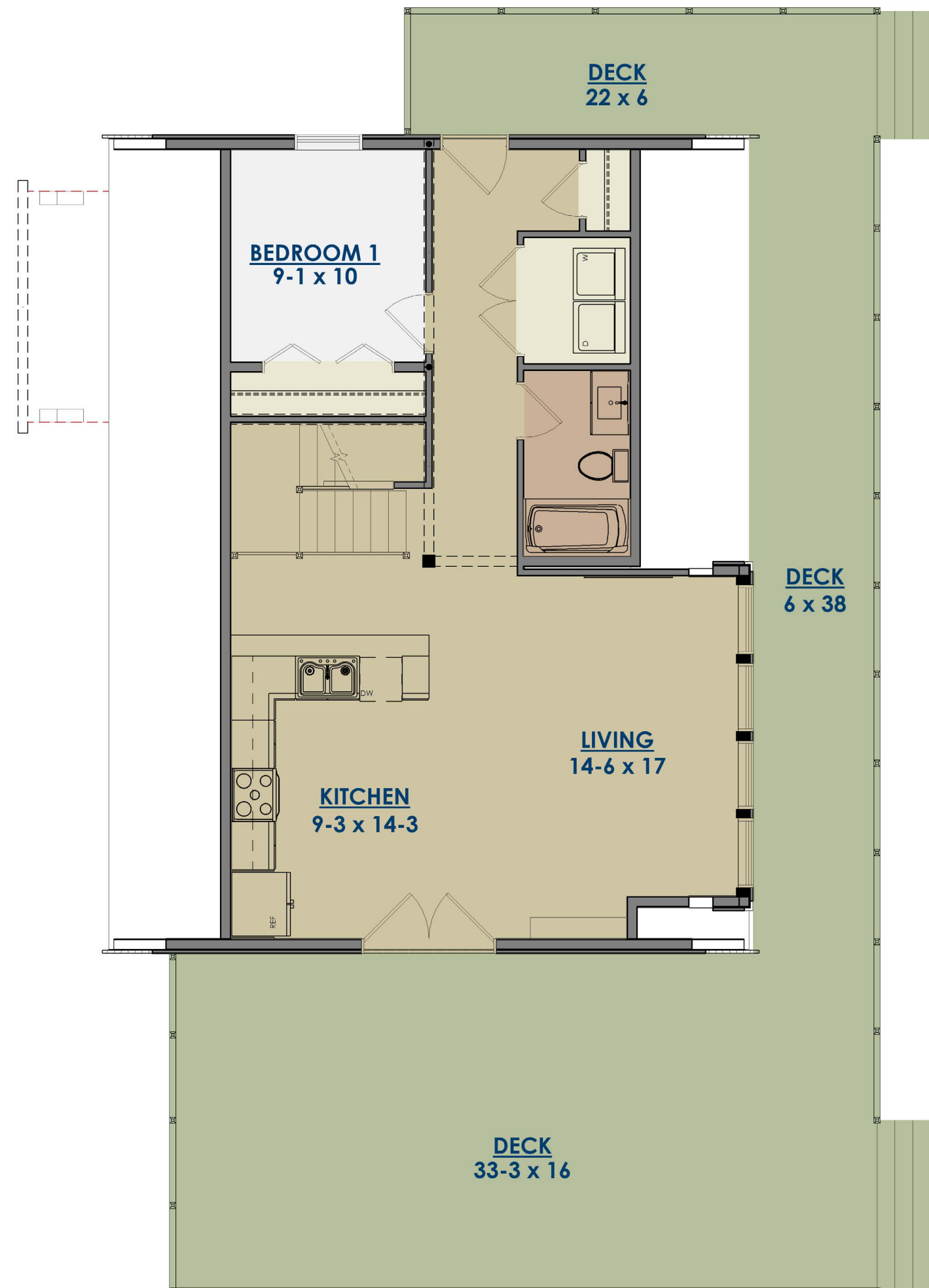




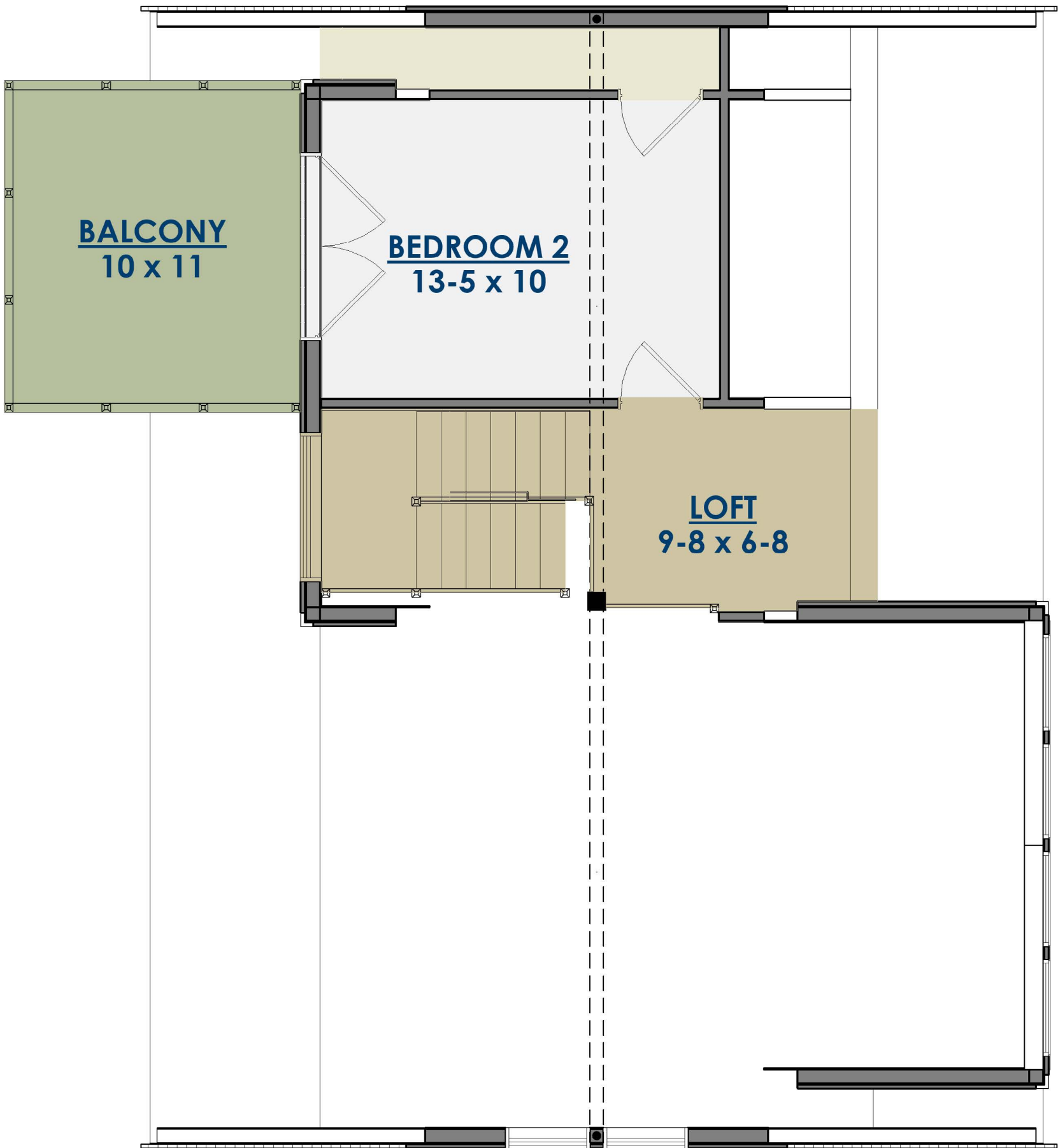




FIRST FLOOR



SECOND FLOOR





## ABOUT | THE ALPINE

Tucked into nature's embrace, The Alpine is more than an A-frame, it's a sanctuary. Defined by soaring ceilings, expansive glass, and a wraparound deck, this design brings the outdoors in without compromise. Every angle frames a view worth savoring—towering pines, mountain horizons, or starlit skies—making nature the centerpiece of your home.

With 2 bedrooms and 1 bath, The Alpine is perfectly sized for quiet retreats or intimate weekends away. It's where simplicity meets sophistication, offering space that feels open, airy, and endlessly inviting.





# the Alpine Sq. Footage

TOTAL: 1427  
2 BEDROOMS  
1 BATHROOM

