

THE JULIANNA

CLASSIC CHARM WITH MODERN VIBES
AND A LOFT VIEW THAT “WOWS.”



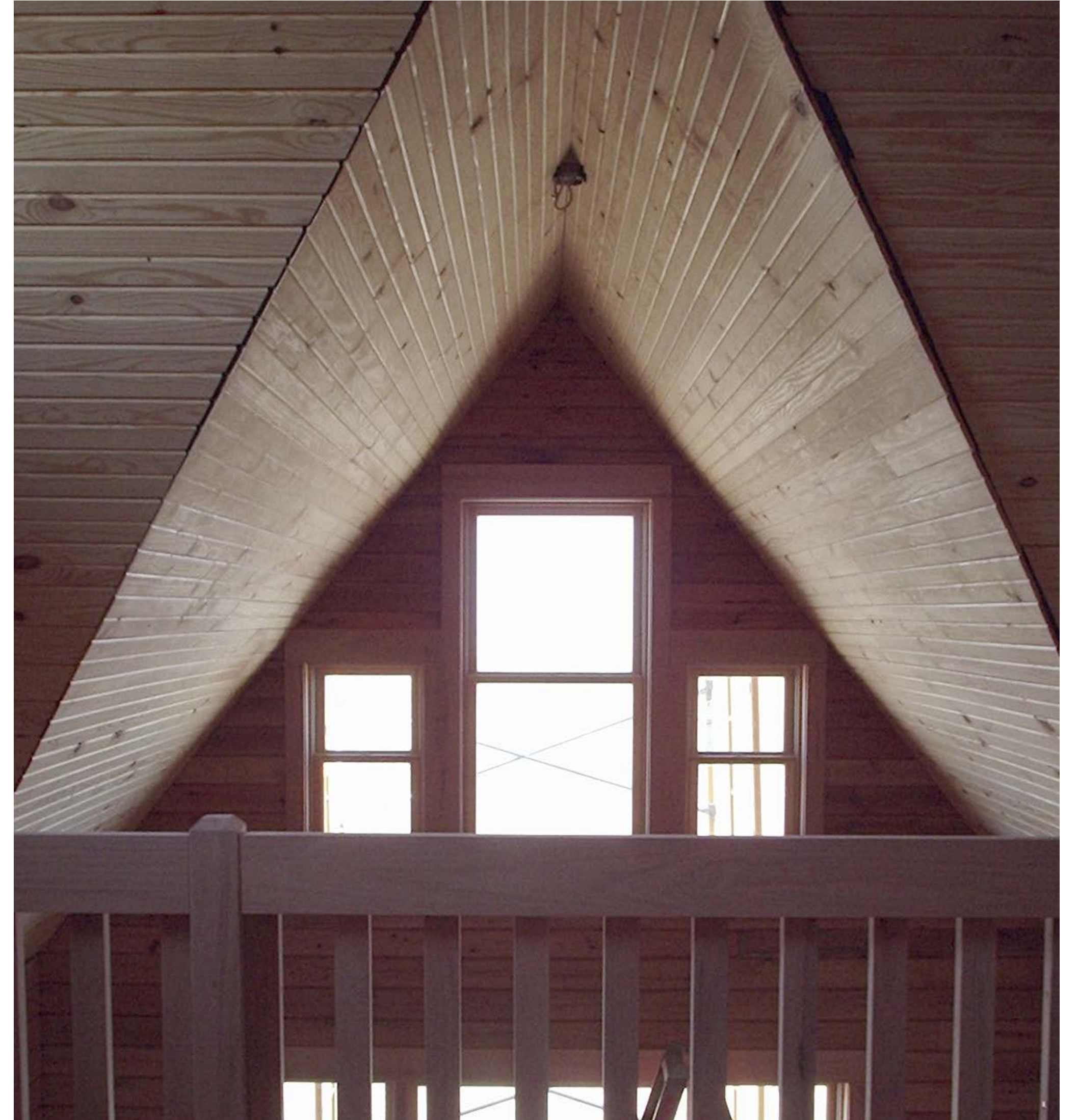
GASTINEAU
Log Homes





FRONT





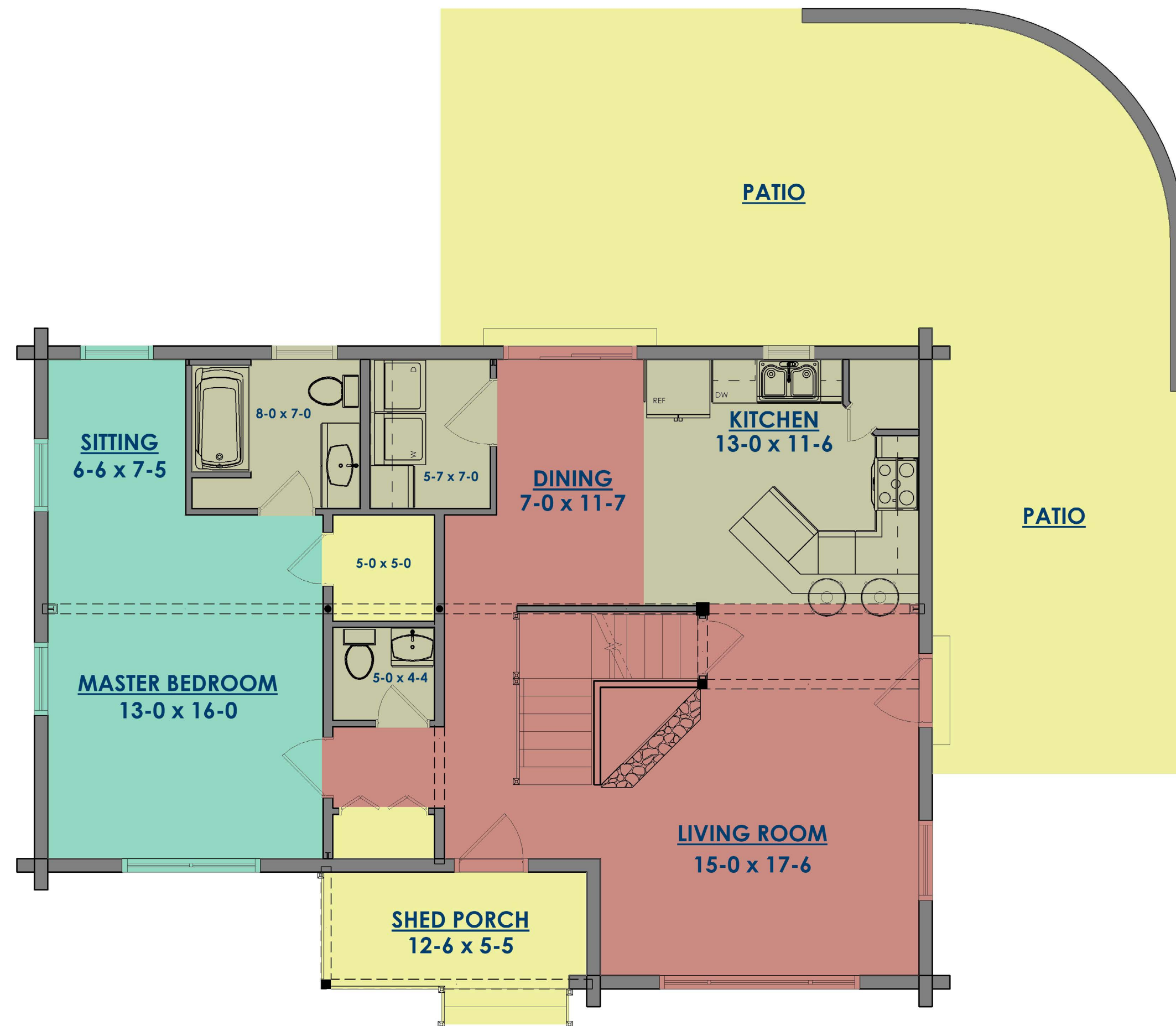




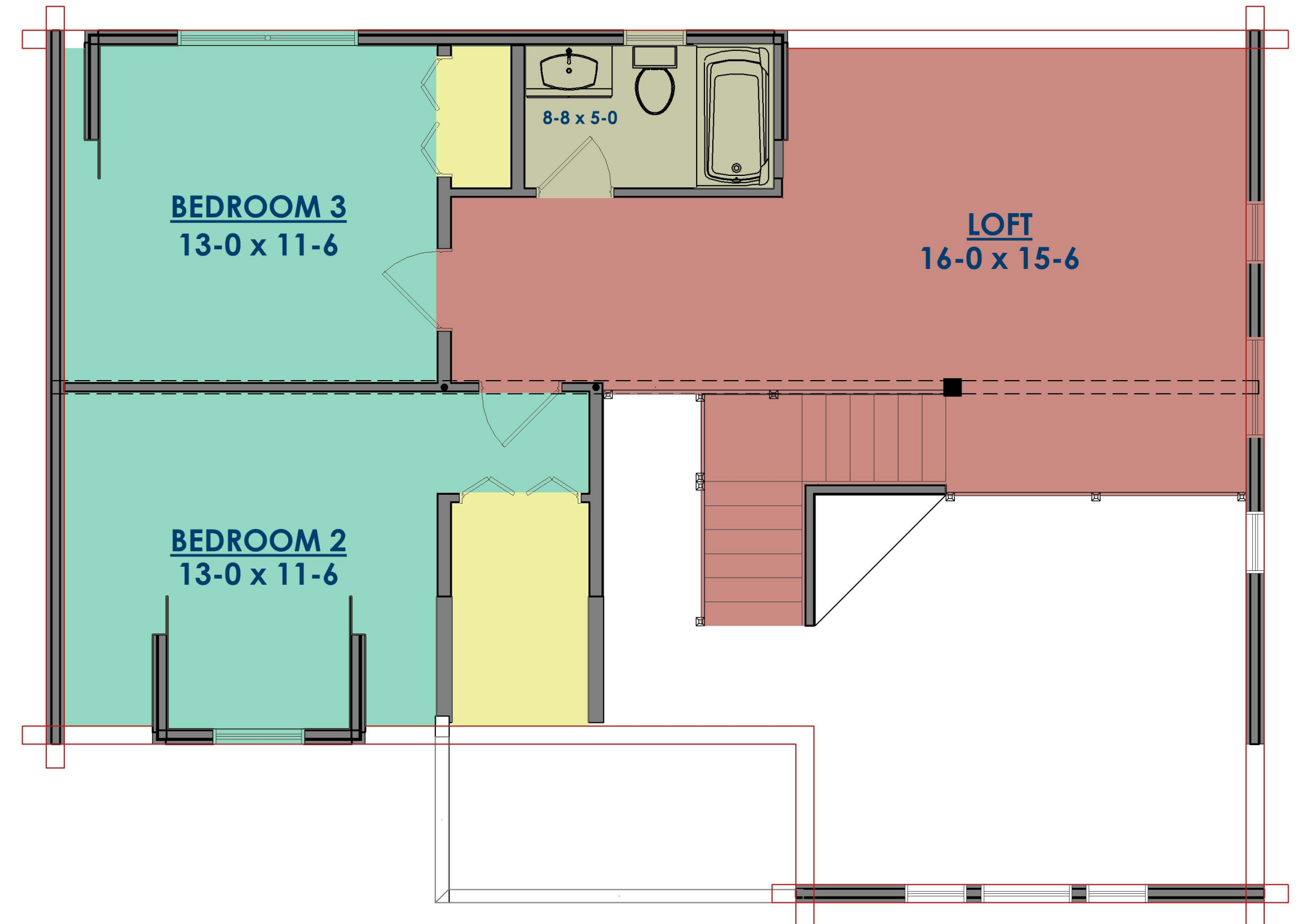




FIRST FLOOR



SECOND FLOOR



ABOUT | THE JULIANNA

Julianna is a home with a traditional look and a contemporary floorplan. The home features the most authentic log home style, shown here with optional chinked square logs, dovetail covers, and board and batten gables. There's a great view from the loft, a beautiful entry hall, and a vaulted great room with fireplace. The kitchen is tucked under the loft and opens to the great room.



the
Julianna

Sq. Footage

TOTAL: 1881
3 BEDROOMS
2.5 BATHROOMS

