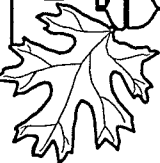


REVISIONS	
DATE	NAME

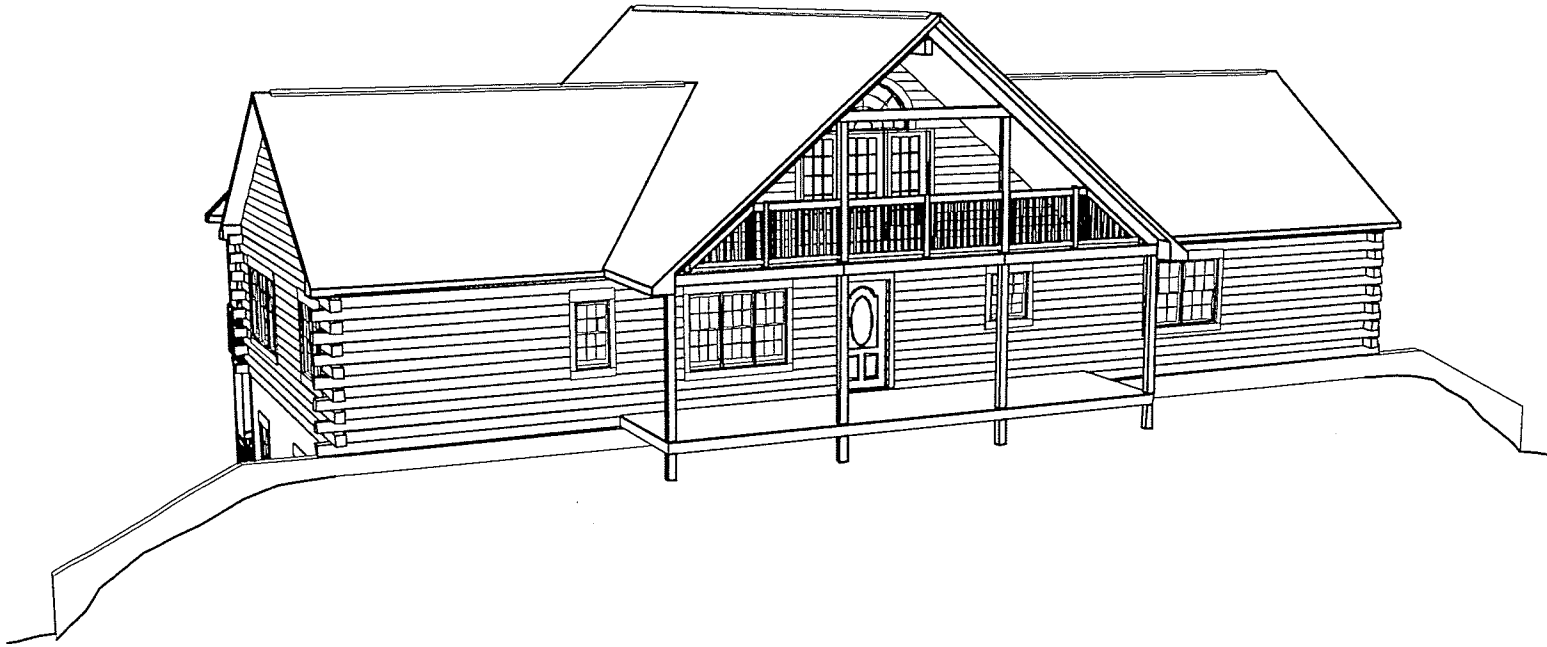
CHECKED BY	
DATE	NAME


GASTINEAU
 Log Homes

CUMBERLAND MOUNTAIN		DRAWN BY
NAME	LOG PROFILE	CUSTOMER NO.
DATE		
CUSTOMER ASST.		
FRONT PERSPECTIVE		

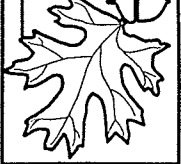
SCALE: 1/8" = 1'-0"

AI



REVISIONS	
DATE	NAME

CHECKED BY	
DATE	NAME



GASTINEAU
 Log Homes

NAME		CUMBERLAND MOUNTAIN	
DATE	LOG PROFILE	DRAWN BY	CURT. NO.
REAR PERSPECTIVE			

SCALE:
A2

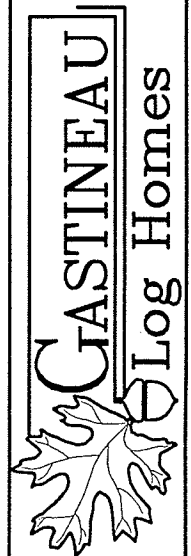
REVISIONS

DATE	NAME

CHECKED BY

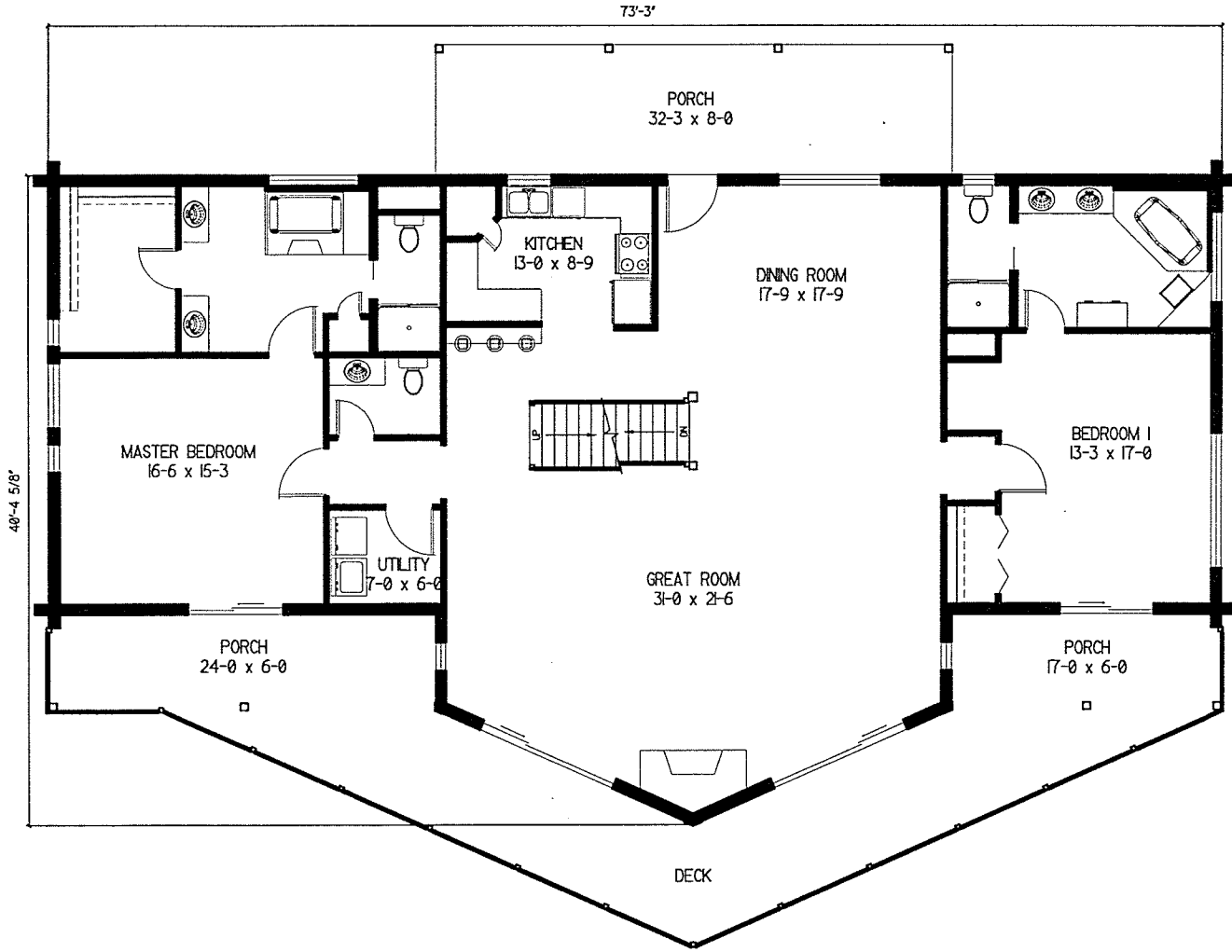
DATE	NAME

-FLOOR SQUARE FOOTAGE: 2304
 -DECK SQUARE FOOTAGE: 373
 -PORCH SQUARE FOOTAGE: 502



NAME CUMBERLAND MOUNTAIN	DRAWN BY	CRAFT NO.
	LOG PROFILE	
	FIRST FLOOR PLAN	

SCALE:
 A3



40'-4 5/8"

73'-3"

PORCH
32-3 x 8-0

KITCHEN
13-0 x 8-9

DINING ROOM
17-9 x 17-9

BEDROOM I
13-3 x 17-0

MASTER BEDROOM
16-6 x 15-3

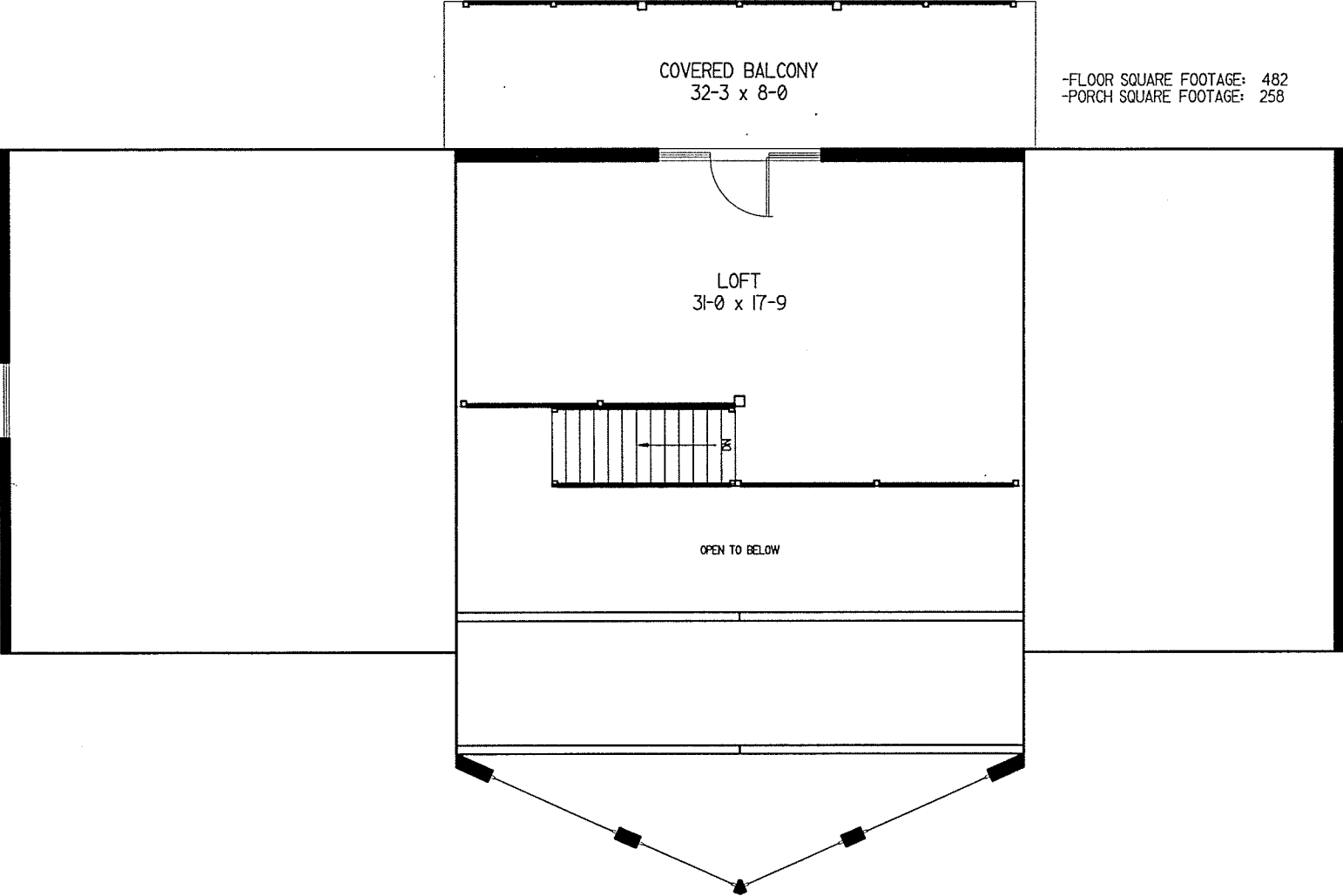
UTILITY
7-0 x 6-0

GREAT ROOM
31-0 x 21-6

PORCH
24-0 x 6-0

PORCH
17-0 x 6-0

DECK



COVERED BALCONY
32-3 x 8-0

-FLOOR SQUARE FOOTAGE: 482
-PORCH SQUARE FOOTAGE: 258

LOFT
31-0 x 17-9

OPEN TO BELOW

REVISIONS	
DATE	NAME

GASTINEAU
Log Homes

NAME		CUMBERLAND MOUNTAIN	
DATE	LOG PROFILE	DRAWN BY	CURT NO.
SCALE:		SECOND FLOOR PLAN	
		A4	

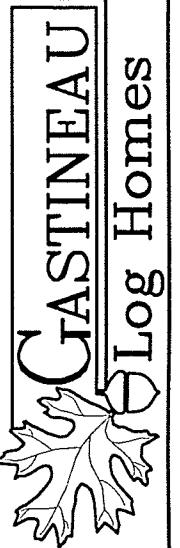
REVISIONS

DATE	NAME

CHECKED BY

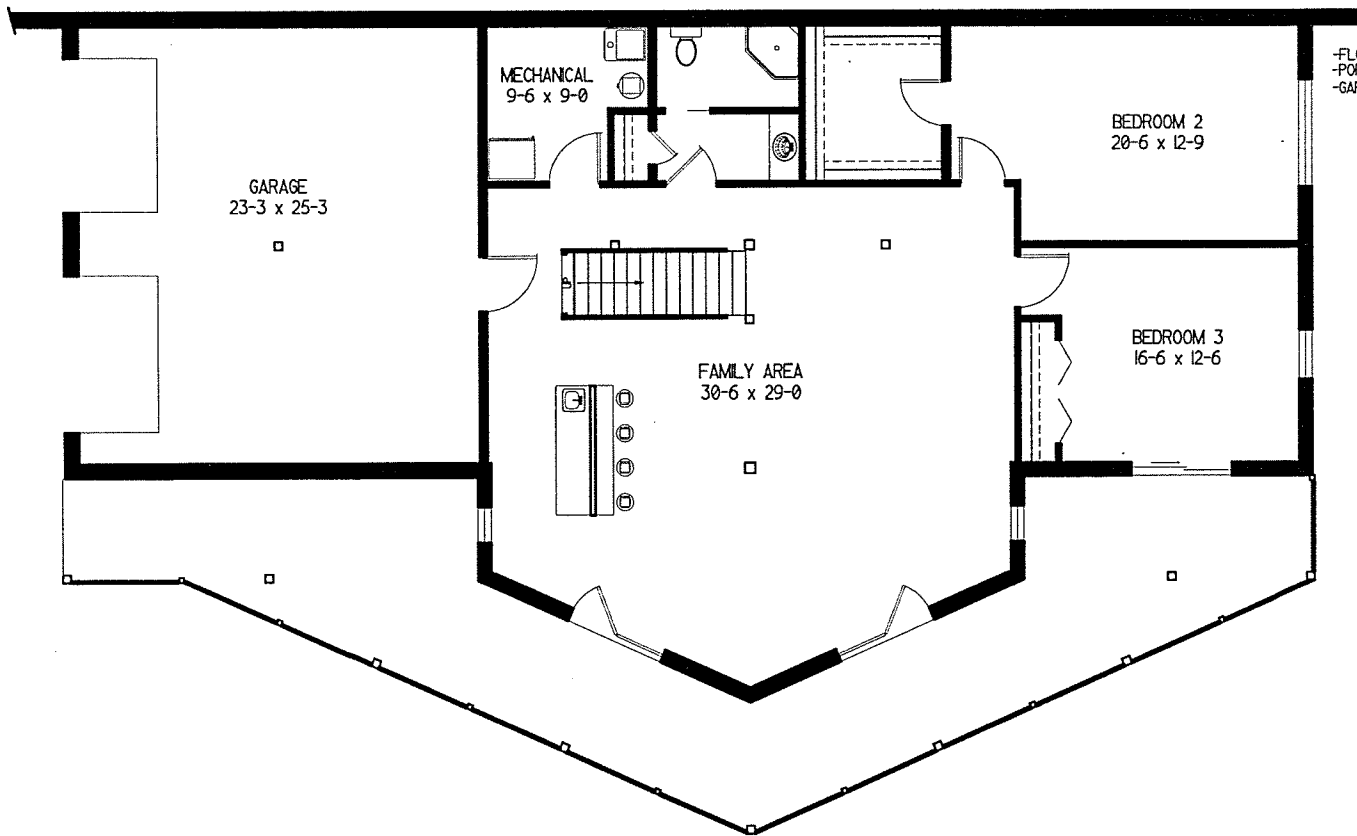
DATE	NAME

-FLOOR SQUARE FOOTAGE: 1516
 -PORCH SQUARE FOOTAGE: 628
 -GARAGE SQUARE FOOTAGE: 590



CUMBERLAND MOUNTAIN
 LOG PROFILE
 DRAWN BY
 DATE
 CUST. ASST.
 CUST. NO.
 FINISHED BASEMENT PLAN

SCALE:
 A5



GARAGE
 23-3 x 25-3

MECHANICAL
 9-6 x 9-0

BEDROOM 2
 20-6 x 12-9

FAMILY AREA
 30-6 x 29-0

BEDROOM 3
 16-6 x 12-6