



The Timbers



Front Perspective

Like this plan?

✿ Make any modifications you would like

✿ Call us at 1-800-654-9253

or

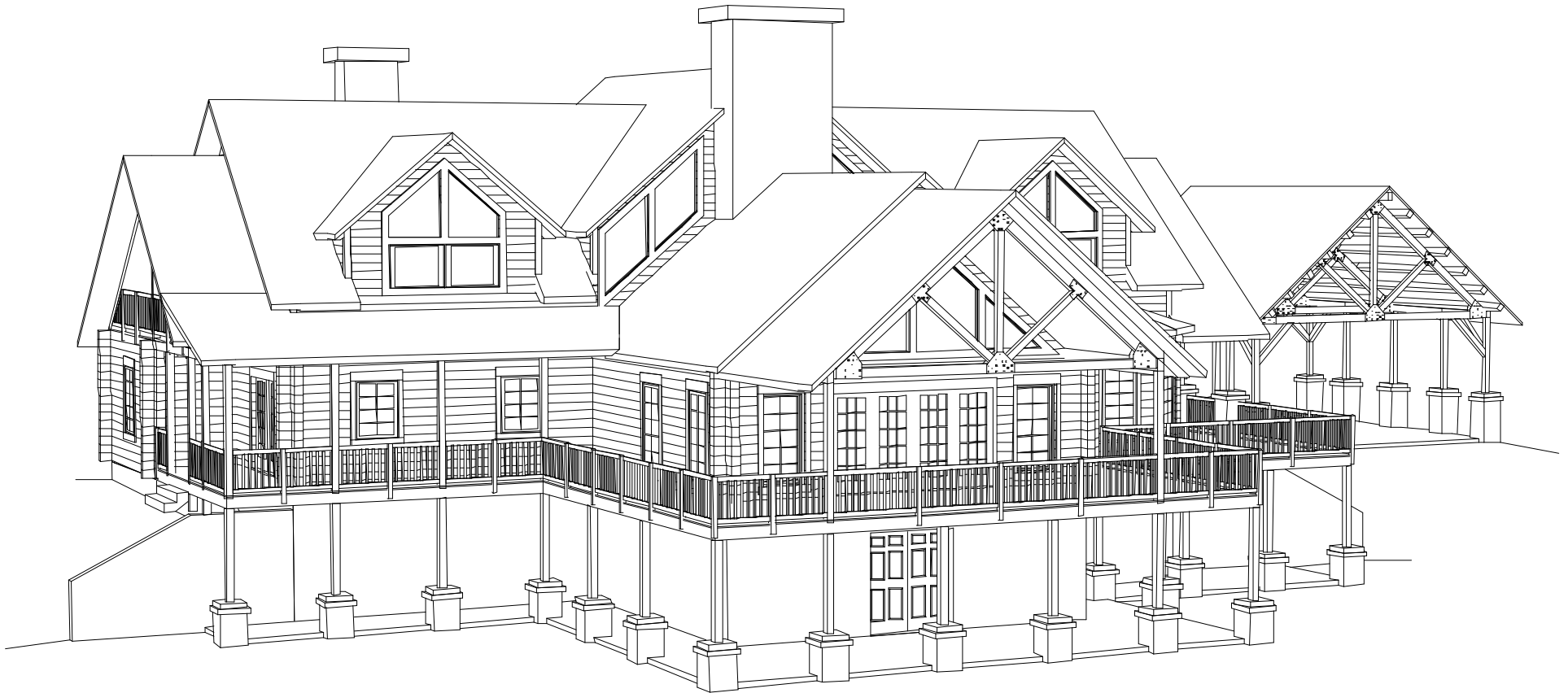
Email us at Sales@OakLogHome.com

✿ Visit us at our National Model Home

Center, Exit 144 on I-70



The Timbers



Rear Perspective

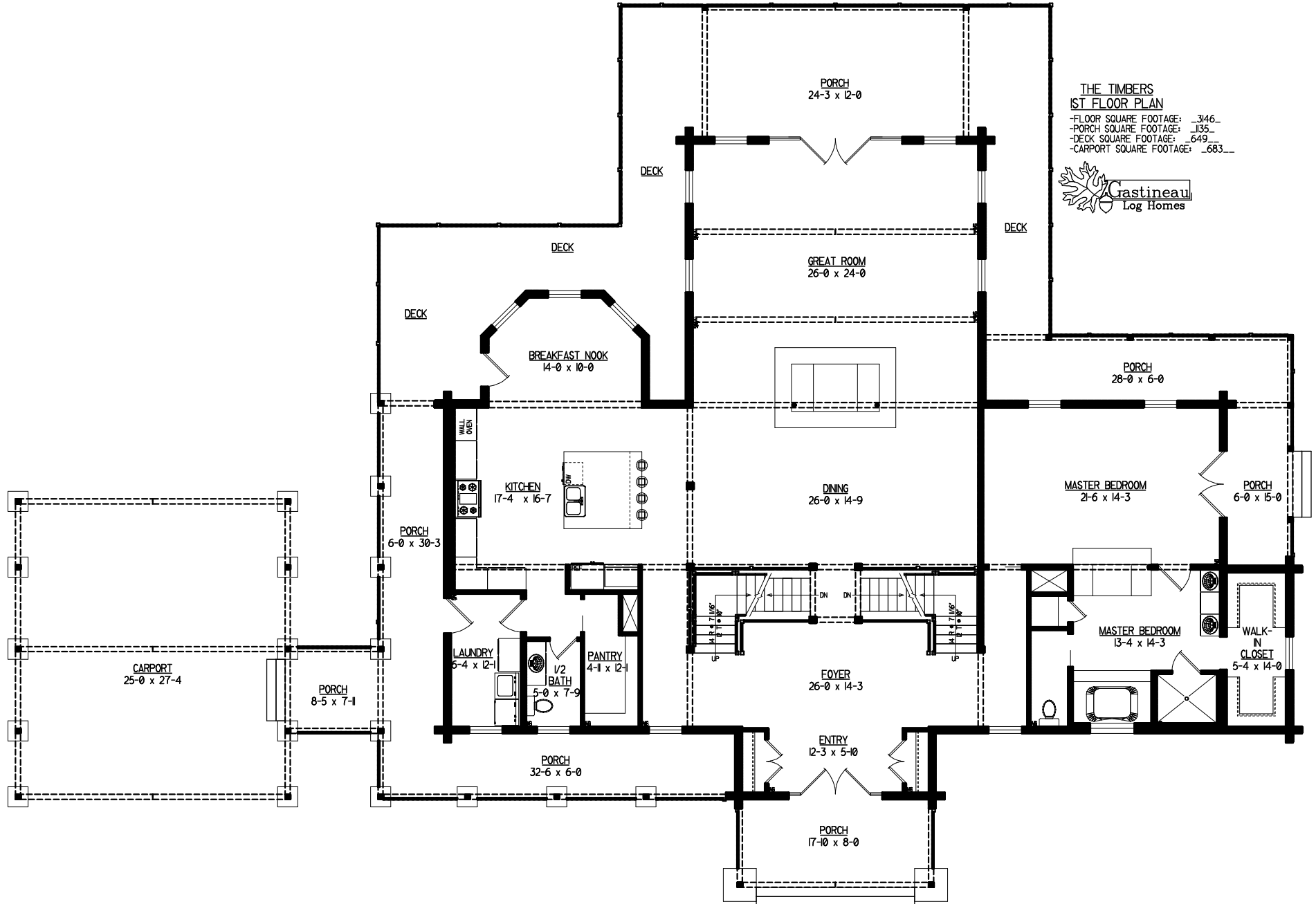
Like this plan?


- ✿ Make any modifications you would like
- ✿ Call us at 1-800-654-9253

or

- Email us at Sales@OakLogHome.com
- ✿ Visit us at our National Model Home Center, Exit 144 on I-70

THE TIMBERS
1ST FLOOR PLAN
 -FLOOR SQUARE FOOTAGE: 3146
 -PORCH SQUARE FOOTAGE: 1135
 -DECK SQUARE FOOTAGE: 649
 -CARPORT SQUARE FOOTAGE: 683



THE TIMBERS
2ND FLOOR PLAN
-FLOOR SQUARE FOOTAGE: _1787_
-PORCH SQUARE FOOTAGE: _362_
Gastineau
Log Homes

